

HUI PŌHAKU 'Ō HAWAII

Rock & Mineral Society of Hawai'i, Inc.



Meeting Times

MEETING

Wednesday
May 22, 2019

6:15-8:00 pm

Makiki District Park
Admin Building

Next Months Topic
Buyer Remorse

LAPIDARY

Every Thursday

6:00-8:00pm

Makiki District Park
2nd floor Arts and
Crafts Bldg

Closed middle of May through the
middle of June

MEMBERSHIP

DUE COSTS 2019

Single: \$10.00

Family: \$15.00

© Rock & Mineral Society of
Hawai'i, Inc.
P.O. Box 23020
Honolulu, HI
96823-3020

Agates Chemical Formula = SiO₂

Agates are a translucent variety of Microcrystalline quartz. It generally forms by the deposition of silica from ground water within the cavities of igneous rocks

The first deposit on the wall of the agate is generally a dark greenish mineral substance rich in iron. Many agates are hollow and the last deposit will commonly consist of druzy quartz crystals within the lined cavity or geode.

Agates developing within secondary hollow cavities are called vesicles. It is this variation in the conditions of the mineral mix that create banding patterns of crystalline quartz.



Rio Grande do Sol, Brazil



Ojo Laguna, Chihuahua, Mexico

AGATES



Baker Egg Ranch, New Mexico

Agates occurs in a wide range of colors which include brown, white, red, gray, pink, black,, yellow. The colors are caused by impurities which occur as alternating bands within the agate. Different colors produced is the effect of different groundwater compositions within the filled cavity.

DIFFERENT TYPES OF AGATES

Fire Agate—Iridescent rainbow of colors

Onyx—formed bands of alternating colors

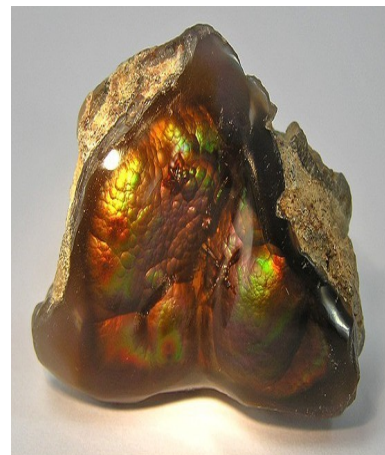
Sardonyx—shades of colored banding

Sagenite—acicular , pointed inclusions

Moss agate—green forming filaments

Coyamito—pseudomorph of the form of another mineral

Ring / Eye—circular rings , carnelian look



Aqua Caliente, Mexico



FAMOUS COLLECTION SITES

Australia—Agate Creek, Queensland

Brazil—Rio Grande do Sol

Germany—Hunsruck Mountains

Mexico—Santa Ulalia, Chihuahua

Czech Republic—Hori Mnts, Bohemia

United States—Lake Superior

AGATES



BEWARE OF FAKES

1. Agates are frequently dyed for color enhancement and sold as a natural stone.
2. Texture—agates are hard. Imitations will scratch easily. Fake agates also appear more transparent.
3. Weight of agates will be much heavier than fake ones.
4. Red, Blue, Green are common dye colors used for enhancement.

PRICING OF AGATES

1. Distinctive, fine, landscape color patterns.
2. Custom cut pieces and polishing
3. Vivid natural colors and banding
4. Inclusions
5. Location, location, location !



USES OF AGATES

1. Polished stones
2. Beads , Necklaces
3. Bookends
4. Carved figurines
5. Hobby collection
6. Ornamental objects

Officers

President

Matthew Martin

Info@naturalhistorylab.com

Vice President/ Admin.

Jon Bly

BLYJ1966@gmail.com

Vice President/ Lapidary

Dean Sakabe

Dean.sakabe@gmail.com

(808) 282-6681

Treasurer

Debbie Iijima

Secretary

Blair Ishitani

Newsletter Editor

Blair Ishitani

The Rock & Mineral Society meets on the 4th Wednesday of each month (except for adjusted dates in November and December) at the Makiki District Park, 6:15-8 pm. Enter from Keeaumoku Street. Parking is free but limited.

The Newsletter is published monthly, some days prior to the meetings and is distributed in electronic format by email (Adobe Acrobat PDF file attachment). Printed copies are "snail" mailed to those who do not have email. The electronic format usually contains full-color images; the print version may be limited to B&W due to reproduction costs.

DOOR PRIZES

Please note that we have instituted door prize drawings at our monthly meetings. Because of Hawaii's gambling laws, these drawings cannot be conducted in the common "raffle" format where tickets are sold. Rather, each *paid* member attending the meeting will receive a drawing ticket upon request. A voluntary donation of \$1.00 is requested and encouraged. Drawings will be conducted at the end of the meeting with available prizes awarded in random order. You must be present to win. Please remember: if you win a prize, please bring one to the next meeting. This helps to keep our drawings going. Thank you.

**Upcoming show at the Ohana
Hale Marketplace**
June 1—10:00 AM—8:00 PM
June 2—10:00 AM—5:00 PM



P.O. Box 23020

Honolulu, HI 96823-3020